

# PAGELynx Pro

## Simple to use keyboard & display

```
PAGELynx 12:00am 01 JAN 2001
1.Send Page 2.Pagers 3.Display 4.System
```

One of the primary benefits of PAGELynx Pro is the simplicity of the user interface. The menu structure has been segmented into four primary areas, designed so that access to all features is achieved simply by pressing the associated menu number.

## Message Dispatch

```
Pager [Dr Smith ] PBX[9 ] [Alpha]
Message[Please come to front desk ]
```

Message dispatch is initiated directly from the integrated keyboard and LCD. Users simply select who they wish to contact from a list of recipients (or by entering their pager id), type in their message and press send. PAGELynx Pro then determines *how* to send the message.

Paging to on-site pagers, city wide pagers, DECT handsets and cell phones occurs transparently to the operator.

## Contact Management

```
Pager[Dr Smith ] Type[Alpha ] PBX[10 ]
RIC[9 ] Node[Transmitt] Priority[N]
```

PAGELynx Pro makes contact maintenance a breeze for administrators. Simply enter in the name of the contact, their pager or phone number and select how to send the message to them.

All operations such as new, delete and save are situated on a single screen ensuring that all operations are only one keystroke away.

## Alarm Monitoring

```
Alarm[Cardiac Arrest Room 102A ]
State[NO]Source[PLynx]Input[1 ]
```

```
Delay[0 ]Pager1[Dr Smith ]
EscT[30 ]Pager2[Dr Edwards]Type[Repeat]
```

Alarms may be easily configured with the keyboard on PAGELynx Pro. Each alarm may be programmed for a message to send and a recipient. If the alarm condition is still active after a preset time period then the alarm message may be escalated to another recipient.

# Specifications

<b>Recipient capacity</b>	500 Pagers, cell phones or DECT handsets
<b>Group capacity</b>	20 Groups (with any combination of recipients)
<b>Manual paging method</b>	via inbuilt keyboard and/or optional Windows software
<b>Call diversion</b>	All recipients may be diverted by keyboard or via PBX interface
<b>Alarm capacity</b>	208 Alarm inputs (Either opto-coupled or dry contact closures)
<b>On board alarm capacity</b>	16 dry contact closure inputs
<b>Alarm programming</b>	32 character alphanumeric message Configurable activation delay Call escalation with programmable escalation time periods
<b>Free Text Interface</b>	10 keywords, associated with an individual recipient or group
<b>PBX Interface</b>	RJ11, Two Wire Analogue Extension (voice prompted)
<b>PBX Messages</b>	10 x User defined messages
<b>Transmitter interface</b>	Female DB9, TTL or RS232 voltage levels PTT, data inversion and channel busy (inhibit)
<b>TAP Interface</b>	TAP v1.8 compliant
<b>Paging protocols</b>	POCSAG CCIR #584 at 512/1200/2400 bps TAP input/output, Comp 1/2, TNPP Simplex/Duplex, Kirk DECT
<b>Input protocols</b>	'Free Text' interface, Ascom Abus
<b>Nursecall input protocols</b>	Austco, Dukane, Gladstone, Jeron, Medicom, Sedco, Rauland-Borg, Tek-Tone, Vitalcall, Wescom, Zettler
<b>Carrier capacity</b>	10 Commercial paging/SMS carriers sharing a common modem
<b>Keyboard and LCD</b>	Standard Windows notebook keyboard and 2x40 character LCD
<b>Serial Ports</b>	2 x RS232 Serial Ports (1 configurable for RS485 operation)
<b>Power requirements</b>	12VDC at 500mA
<b>Compliance</b>	Australian A-Tick, C-Tick United States FCC Part 15, FCC Part 68
<b>Email Integration</b>	POP3 Client over TCP/IP (requires optional Windows software)
<b>Remote Diagnostics</b>	Via on board modem (via Windows interface or Hyperterminal)
<b>Dimensions</b>	360 x 220 x 86mm (14 x 8.7 x 3.4 inches)
<b>Weight</b>	2.5kg / 5.5lb

*Whilst every care has been taken in the preparation of this brochure CommtechWireless reserves the right to make alterations at any time.*

**CommtechWireless**

[www.commtechwireless.com](http://www.commtechwireless.com)

**Australia**  
POB 1037  
OPDC WA 6916  
Phone +61 8 9244 5550  
Facsimile +61 8 9244 5559  
[sales@commtech.com.au](mailto:sales@commtech.com.au)

**USA**  
6900 Phillips Highway, Suite #26 & 27  
JACKSONVILLE, FL 32216  
Phone +1 904 281 0073  
Facsimile +1 904 281 0074  
[sales@commtechwireless.com](mailto:sales@commtechwireless.com)



<http://www.commtech.com.au>



# PAGELynx Pro

Desktop Messaging Solutions



**CommtechWireless**

# PAGELynx Pro

The best in messaging technology is now available to your organisation. Through ten years of Research & Development Commtech Wireless are able to bring to market a unique product that will ensure that all message handling needs are fulfilled with one simple to use product.

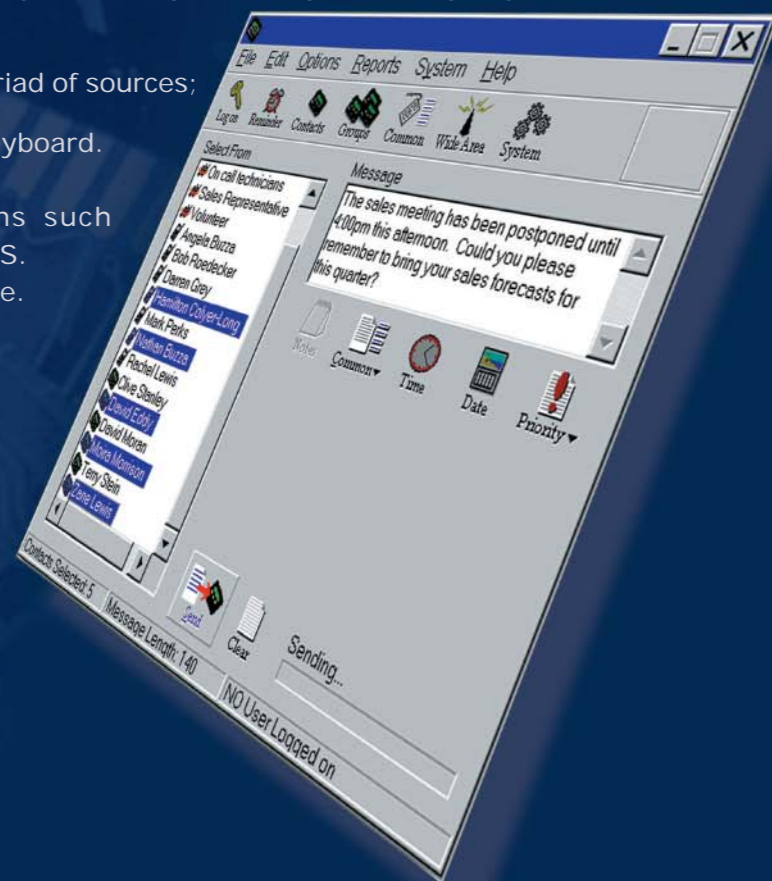
PAGELynx Pro is a complete desktop messaging system, providing the seamless integration of on-site paging, DECT messaging, wide area paging and SMS to mobile phones.

Automatic alarm gathering in conjunction with the manual paging facilities provides a simple, yet sophisticated, communications system. This communications system is ideal for small to medium sites that wish to be able to send messages from a central point to people both locally and remotely.

As well as monitoring its on board alarms, PAGELynx Pro can process messages generated by third party systems. Furthermore, you can integrate PAGELynx Pro with your PBX and email systems, enabling messages to be generated from virtually anywhere. If you utilize these features then PAGELynx Pro becomes the hub of a large communications network, and becomes responsible for processing all messages coming into and going out from the system.

Messages may be initiated from a myriad of sources;

- Directly from the PAGELynx Pro keyboard.
- Via Windows® dispatch software.
- From external alarm conditions such as nurse call, security, fire and BMS.
- Voice prompted telephone interface.
- Directly from email clients.



## Healthcare

Within a hospital, paging is primarily used for inter-staff communication via the PBX. Staff members can use any telephone to enter the extension number to call back on or select from a set of predefined messages to specify tasks for a staff member to perform.

Hospitals also require the integration of numerous other systems into the messaging system such as nurse call, building management, security and fire alarms. These alarm systems generate a predefined alphanumeric message and alert staff to potential problems.

## Hotels

The hospitality industry is one of the fastest growing industries in the world. It is the hub for both business and recreation alike and as such, guest service is paramount in maintaining and expanding their clientele.

Increasingly, messaging systems are depended upon as the vital link in alerting staff to matters of security and fire as well as normal operations such as meetings and locating staff quickly and quietly. In addition, paging ensures staff receive a written record of tasks, automatic work distribution, automated calls from alarms and group calls.

## Emergency Services

The emergency services consists of departments made up of volunteer and/or paid career emergency services personnel. As a whole, the emergency services market uses a multitude of sophisticated communications equipment of which paging plays a vital role.

The pager is the ideal solution for locating a large number of mobile staff at a relatively low cost. Coupled with its group call facilities, voice prompted telephone access and a high powered transmitter infrastructure PAGELynx Pro is the ideal solution for police, ambulance and fire fighters.

## Casinos & Clubs

In most casinos & clubs, an enormous amount of playing time is wasted while patrons 'go hunting' for a supervisor to solve a simple problem. Usually it's to claim a jackpot or perhaps they simply put their machine on reserve while they go to purchase a drink.

PAGELynx Pro reduces the time the slot machines stand idle, thereby increasing the turnover of your slot machines. Each machine is fitted with a service call button, and every member of the floor staff wears a pager. When patrons require service, they simply press the button. The relevant staff member is then contacted and the slot machine number and the service required is displayed on the pager.

## Message Dispatch

In addition to an inbuilt keyboard for message dispatch PAGELynx Pro is supplied with Windows® dispatch software. One of the key features of PAGELynx Pro is that although a PC may be used for administration and message dispatch it is not required in order for PAGELynx Pro to operate.

## PBX Interface

A voice prompted PBX interface enables staff to send messages directly to recipients without the assistance of an operator. The user is guided through the entire process via a series of voice instructions. In addition staff may also make themselves absent or present from the paging system.

## E-mail Integration

Email has become the communications medium of choice for the business community, around 40% of the average work force is mobile, and virtually all professional people have a mobile phone or pager. PAGELynx Pro enables your organisation to establish 'email watches' so that selected emails may be forwarded directly to mobile phones and pagers.

## Alarm Monitoring

Sixteen alarm inputs are supplied as standard on PAGELynx Pro with the ability to expand this through the use of Alarm Interface Modules (AIMs). As soon as an alarm is activated a predetermined message describing the alarm, its location as well as any other details concerning the alarm will be instantly sent to the appropriate personnel. In addition to the monitoring of dry contact inputs, PAGELynx Pro also supports a 'free text' interface that enables interfacing into most popular nurse call, fire, security, BMS and duress systems.

## City Wide Paging & Remote Diagnostics

Remote diagnostics enables qualified installers to remotely modify the system as well as perform diagnostic checks. The same modem that allows remote diagnostics also enables PAGELynx Pro to call up commercial carriers to send messages to pagers and mobile phones.

