

PD6 Series

Rugged Digital Radio



- GPS Option and Integration with Data Applications
- Durable and Feature-Rich in an Innovative, Compact Design



PD682

PD662

PD602



PD6 Series

The PD6 Series is an open-standard DMR radio rich in features for both voice and data communication in a design approved to rigorous IP67 and MIL-STD 810 testing. It is the ideal solution for organizations looking for an affordable migration from analog to digital technology. The Hytera-patented pseudo-trunking maximizes channel usage. The PD6 Series G also comes with an optional GPS chip that allows the radio to integrate with Hytera Dispatch System or other 3rd party GPS dispatching software.

Applications

Construction

Education

Hospital

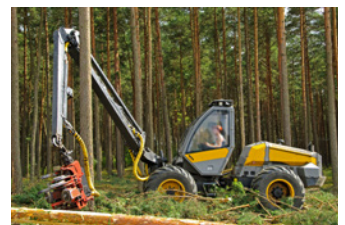
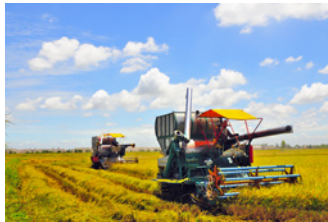
Hotel

Security

Factories

Farming

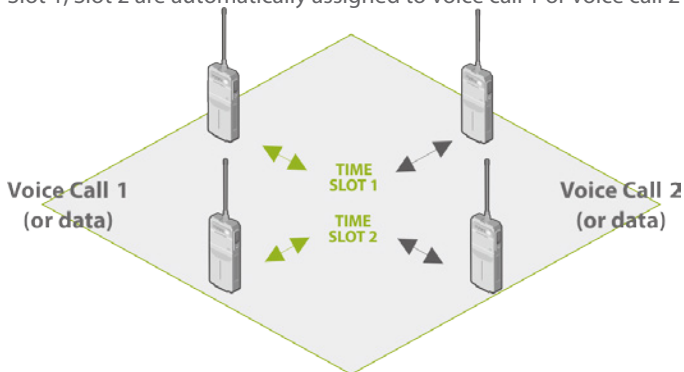
Forestry



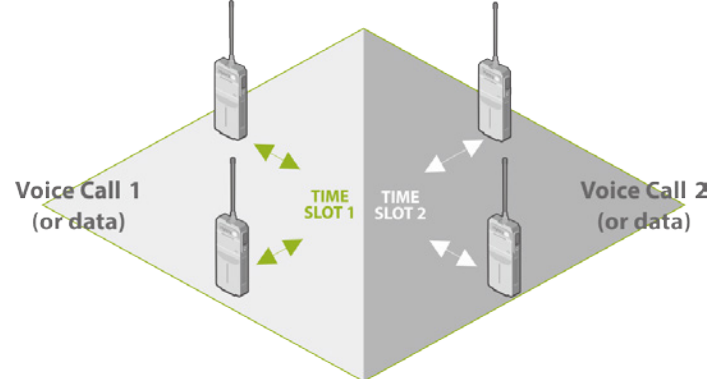
Product Features

- Smaller, Sleeker, Lighter**
 The PD6 Series has a light weight PC & Metal frame design. P602 is 4.7 x 2.13 x 1.1 inches weighing 10.23oz, PD662 / PD682 is 4.8 x 2.17 x 1.1 inches weighing 10.93oz.
- Rugged & Reliable**
 Complies with MIL-STD-810 C/D/E/F/G standards and passes HALT (Highly Accelerated Life Test).
- Wider Available Frequency Range**
 Expanded frequency range of 400-527MHz.
- Dual Mode: Analog & Digital**
 Dual mode (analog & digital) operation ensures a smooth analog to digital migration.
- Secure Communication**
 Allows basic/advanced digital encryption and Scrambler feature in analog mode.
- Advanced Signaling**
 Supports multiple advanced analog signaling modes, including HDC1200, 2-Tone and 5-Tone, providing better integration into existing analog radio fleets.
- DMRA Data Service**
 The data protocol is fully compliant to DMRA standard.
- Pseudo Trunk**
 This virtual trunking feature allocates a free timeslot for urgent communications. This effectively enhances frequency efficiency and allows you to communicate in a timely manner in emergency situations. See example below.
- GPS Positioning (Factory Option)**
 The built-in GPS module in the PD6 series G supports GIS applications.
- Man Down (Factory Option)**
 When a user falls down, the radio can automatically alert others.
- Further Development Port**
 The reserved side port allows users or any third party partner to further develop other helpful applications to extend radio functionalities.
- One Touch Call/Text**
 Supports One Touch features that comprise of Preprogrammed Text Messages, Voice Calls and Supplementary Features.
- Supplementary Features**
 PD6 Series can decode radio enable, radio disable, and remoter monitor as well as Priority Interrupt.
- Radio Priority-Based Interruption (Factory Option)**
 Enables an administration or manager radio to interrupt calls for emergency or urgent communication.
- IP67 Protection**
 The Ingress Protection reaches IP67 (6: Totally protected against dust; 7: Protected against the effects of immersion up to 1m for 30 minutes). It's the highest IP level for land-based wireless radio application.
- DMO True 2-Slot / DMRA Direct Mode**
 In Directmode Hytera can provide 2-slot communication, which allows for 2 talk paths on 1 frequency. See example below.

Slot 1, Slot 2 are automatically assigned to voice call 1 or voice call 2



Slot 1 is used for voice call, Slot 2 is used for voice call 2



Accessories

Included

- Li-Ion Battery
- MCU Rapid-rate Charger
- Power Adapter
- Antenna
- Belt Clip

Optional



Detachable Earpiece with Transparent Acoustic Tube EHN22



MCU Multi-Unit Charger (for Thick Battery) MCA08



Programming Cable (USB Port) PC45



Battery 2000mAh (Li-Ion) BL2010

See website for full list

Specifications

General	Frequency Range	VHF: 136 - 174MHz UHF: 400 - 527MHz	
	Channel Capacity	PD602	32
		PD662 PD682	1024
	Zone Capacity	PD602	3
		PD662 PD682	64
	Channel Spacing	25 / 20 / 12.5KHz	
	Operating Voltage	7.4V	
	Battery	1500mAh (Li-Ion)	
	Battery Life (5/5/90)	Analog	Approx. 11hrs
		Digital	Approx. 16hrs
	Frequency Stability	±0.5ppm	
	Antenna Impedance	50 Ω	
	Dimensions (HxWxD)	PD602	4.7 x 2.13 x 1.1 inches
		PD662 PD682	4.8 x 2.17 x 1.1 inches
Weight	PD602	10.23oz	
	PD662 PD682	10.93oz	
FCC ID	See website for full list		
Industry Canada ID	See website for full list		

Environmental Specifications	Operating Temperature	-22° F ~ +140° F
	Storage Temperature	-40° F ~ +185° F
	ESD	IEC 61000 - 4 - 2 (level 4) ±8kV(contact) ; ±15kV (air)
	American Military Standard	MIL-STD-810 C/D/E/F/G
	Dust & Water Intrusion	IP67 Standard
	Humidity	Per MIL-STD-810 C/D/E/F/G Standard
	Shock & Vibration	Per MIL-STD-810 C/D/E/F/G Standard

GPS	TTFF (Time To First Fix) Cold Start	<1 minute
	TTFF (Time To First Fix) Hot Start	<10 seconds
	Horizontal Accuracy	<10 meters

Transmitter	RF Power Output	VHF: High 5W - Low 1W UHF: High 4W - Low 1W
	FM Modulation (Analog Emissions Designator)	11K φF3E @ 12.5KHz; 14KφF3E @ 20KHz; 16KφF3E @ 25KHz
	4FSK Digital Modulation (Digital Emissions Designator)	12.5KHz Data Only: 7K6φFXD 12.5KHz Data & Voice: 7KφFXW
	Conducted/Radiated Emission	-36dBm<1GHz -30dBm>1GHz
	Modulation Limiting	±2.5KHz @ 12.5KHz; ±4.0KHz @ 20KHz; ±5.0KHz @ 25KHz
	FM Hum & Noise	40dB @ 12.5KHz; 43dB @ 20KHz; 45dB @ 25KHz
	Adjacent Channel Power	60dB @ 12.5KHz 70dB @ 20/25KHz
	Audio Response	+1 ~ -3dB
	Audio Distortion	≤ 3%
	Digital Vocoder Type	AMBE++ or SELP
	Digital Protocol	ETSI-TS102 361-1, 2&3

Receiver	Sensitivity	Analog	0.22 μ V (12dB SINAD); 0.22 μ V (Typical) (12dB SINAD); 0.4 μ V (20dB SINAD)
		Digital	0.22 μ V/BER5%
	Selectivity TIA-603 ETSI	60dB @ 12.5KHz / 70dB @ 20/25KHz 60dB @ 12.5KHz / 70dB @ 20/25KHz	
	Intermodulation TIA-603 ETSI	70dB @ 12.5/20/25KHz 65dB @ 12.5/20/25KHz	
	Spurious Response Rejection TIA-603 ETSI	70dB @ 12.5/20/25KHz 70dB @ 12.5/20/25KHz	
	Blocking TIA-603 ETSI	90dB 84dB	
	S/N	40dB @ 12.5KHz; 43dB @ 20KHz; 45dB @ 25KHz	
	Rated Audio Distortion	≤ 3%	
Audio Response	+1 ~ -3dB		
Conducted Spurious Emission	< -57dBm		

Your Local Dealer

Hytera America

Address: 3315 Commerce Parkway
Miramar, Florida 33025, USA
Tel: 800-845-1230 Fax: 954-846-1672
<http://www.hytera.us>

Hytera
Respond & Achieve

20KHz / 25KHz will not be available on new equipment in the U.S. after January 1st, 2011

Hytera reserves the right to change product designs or specifications at any time. If you have any questions regarding the accuracy of this information please contact your local sales representative or Hytera directly.

HYT, Hytera are registered trademarks of Hytera Co., Ltd. © 2013 Hytera Co., Ltd. All rights reserved.



EN20140616C